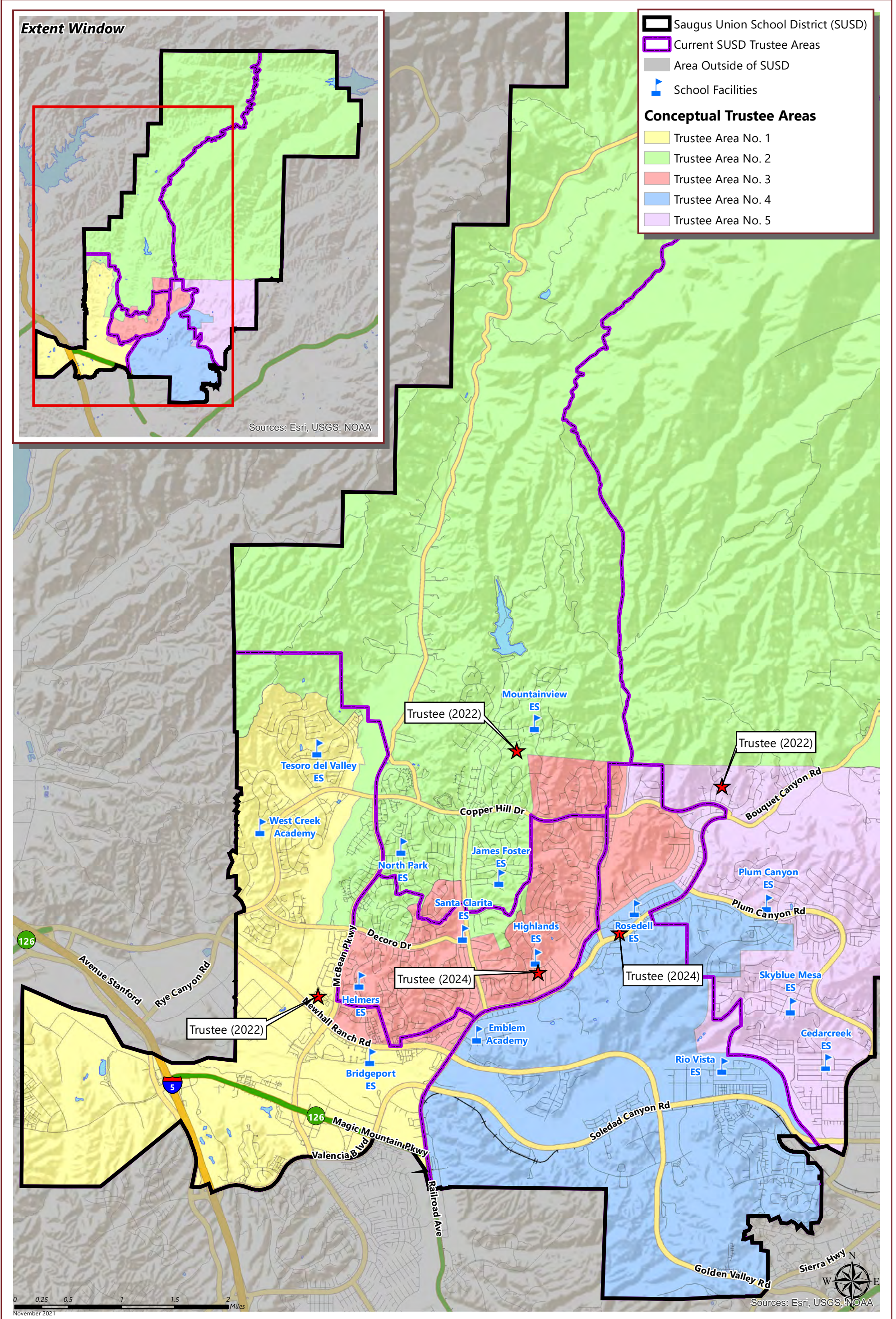


SAUGUS UNION SCHOOL DISTRICT CONCEPTUAL TRUSTEE AREAS - SCENARIO 1



SAUGUS UNION SCHOOL DISTRICT

CONCEPTUAL TRUSTEE AREAS - SCENARIO 1

Total Population:	116,411	Ideal Population:	23,282	Variance:	5.2%
--------------------------	----------------	--------------------------	---------------	------------------	-------------

Total Population (2020 Census)					
	Trustee Area 1	Trustee Area 2	Trustee Area 3	Trustee Area 4	Trustee Area 5
Population	23,010	23,182	23,361	22,821	24,037
Population Variance	-272	-100	79	-461	755
	-1.2%	-0.4%	0.3%	-2.0%	3.2%
Hispanic/Latino	19.9%	22.4%	25.2%	34.1%	37.7%
White	43.3%	57.9%	57.0%	40.0%	43.8%
Black/ African American	4.4%	2.7%	2.3%	5.0%	3.5%
American Indian/ Alaska Native	0.1%	0.2%	0.2%	0.2%	0.2%
Asian	25.5%	10.7%	9.7%	15.3%	9.8%
Native Hawaiian/ Other Pacific Islander	0.2%	0.1%	0.1%	0.1%	0.2%
Other	0.9%	0.5%	0.6%	0.6%	0.6%
Two or More Races	5.7%	5.5%	4.9%	4.7%	4.3%

Population 18 and Over (2020 Census)					
	Trustee Area 1	Trustee Area 2	Trustee Area 3	Trustee Area 4	Trustee Area 5
Population	16,533	17,904	18,303	17,263	18,177
Hispanic/Latino	18.9%	20.0%	22.7%	31.8%	35.2%
White	45.3%	60.8%	59.9%	43.1%	46.7%
Black/ African American	5.0%	2.8%	2.4%	5.1%	3.6%
American Indian/ Alaska Native	0.2%	0.2%	0.2%	0.2%	0.3%
Asian	25.5%	11.1%	10.0%	15.5%	10.1%
Native Hawaiian/ Other Pacific Islander	0.2%	0.2%	0.1%	0.1%	0.2%
Other	0.7%	0.5%	0.6%	0.6%	0.6%
Two or More Races	4.2%	4.5%	4.0%	3.6%	3.5%

Citizens by Voting Age Population Estimate (2015-2019)					
	Trustee Area 1	Trustee Area 2	Trustee Area 3	Trustee Area 4	Trustee Area 5
Population	12,901	15,635	16,064	14,082	14,223
Hispanic/Latino	17.8%	18.0%	18.1%	32.9%	33.0%
White	53.2%	67.4%	66.3%	47.9%	52.4%
Black/ African American	3.6%	4.1%	3.2%	5.4%	3.2%
American Indian/ Alaska Native	0.6%	0.1%	0.2%	0.2%	0.2%
Asian	22.0%	8.3%	10.8%	10.8%	8.3%
Native Hawaiian/ Other Pacific Islander	0.0%	0.1%	0.0%	0.0%	0.0%
Other	0.0%	0.0%	0.0%	0.0%	0.0%
Two or More Races	2.8%	2.0%	1.4%	2.8%	2.8%