

SWREC January 2020 Newsletter

[View this email in your browser](#)



Southwest Regional
EDUCATION COOPERATIVE

Professional Development and SPED Services
1321 E Poplar St
Deming, NM 88030
(575) 546-5951

Volume 1 January 2020 Edition

Here is our January issue of 2020! You are receiving a copy because your district is a member of SWREC or you signed up to receive our monthly newsletters.

We hope you like what you see and that information contained is useful. We know not all content is for everyone, but we hope there is something you find informative! Please feel free to give feedback regarding content, whether it is what is included or something you'd like to see, by emailing Prestine (pparten@swrecnm.org) or calling 575-546-5951. Thank you!



[Take me to SWREC Events Calendar](#)

Upcoming Events



A complete list of events and registration links can be found on our website calendar.

Just click the "Take me to SWREC Events Calendar" button above!

Professional Learning Opportunities at SWREC Training Center 1321 E Poplar in Deming, NM

Click on titles for more information and registration information.

[Istation: Digging Deep](#) Jan 17

[How to Write Informational Text with Jill Jackson](#) Jan 21

[Leadership Academy: What Every Leader Should Know Session 3](#) Jan 23

[The IEP: It is More than Just a Legal Document](#) Jan 24

[Dossier Meeting](#) Jan 27

[It Takes a Team: Building Yours with Microsoft Teams](#) Jan 28

[CPI Initial Training](#) Jan 29

[Navigating the Waters: What Every Administrator Needs to Know About Special Education and Section 504](#) Feb 3

[Dossier Meeting](#) Feb 4

[CPI Refresher Training](#) Feb 6 [Morning Session](#) and [Afternoon Session](#)

[Dossier Meeting](#) Feb 10

[CPI Initial Training](#) Feb 11

[Keep Growing Engagement with NM Agriculture in the Classroom - An NGSS Experience \(Grades 6-12\)](#) Feb 12

[Keep Growing Engagement with NM Agriculture in the Classroom - An NGSS Experience \(Grades K-5\)](#) Feb 13

FREE to member district staff!

Cost is \$150 for non-member districts for full-day workshops, \$75 for half-day workshops.

If you have any questions, please call (575) 546-5951 and ask to speak with Lisa Pastran, our Event Coordinator extraordinaire!



Have IDEAS or NEEDS for other learning topics?

Email Chasity Montes at cmontes@swrecnm.org to share!

Working on your Dossier?

Please reach out to your local coach for assistance in beginning your dossier or help with the process!

What your coaches will provide...

- 1. Packet of Dossier Requirements & Guidelines**
- 2. Concept map for overall picture**
- 3. *Where do I Start?* Guidance document**
- 4. Info on submission dates and fees**
- 5. Guidance on PED documents online**
- 6. Share questions and concerns**
- 7. Ongoing support and communication with Dossier Coach-virtually**

Regional Dossier Coach(s):
Deborah Villalba- dvillalba@swrecnm.org

Chasity Montes- cmontes@swrecnm.org



December Training Recap

98 members attended our December Trainings:

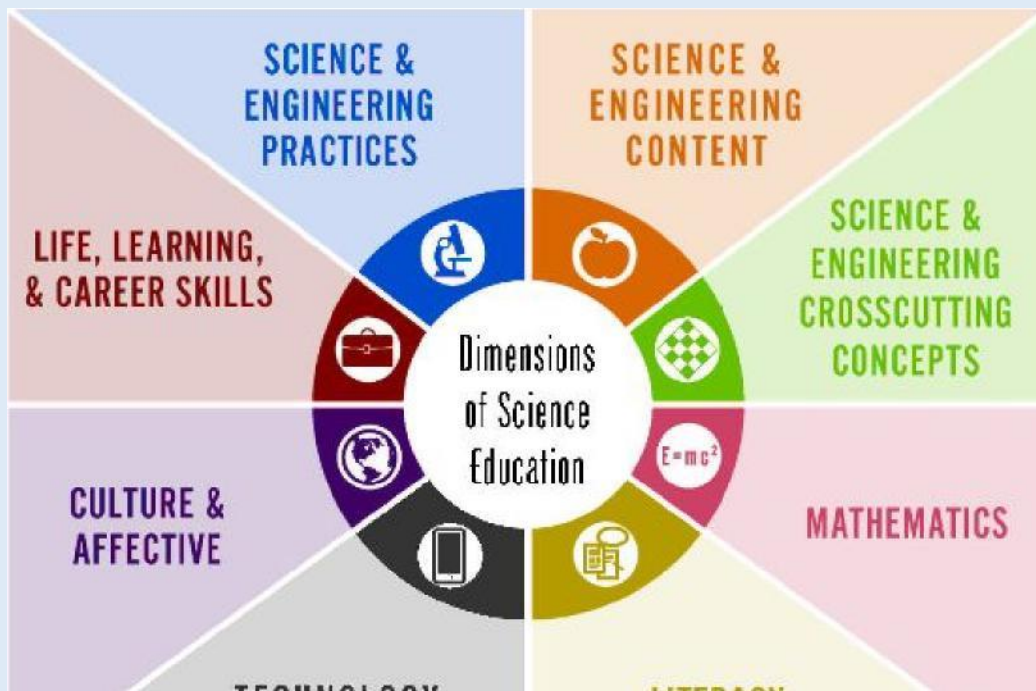
Guided Math Workstations: It's Not Just Worksheets!

Moving the Needle-Improving the Performance of the Mediocre Teacher

Project GLAD Teacher Training 2019

Be an Effective Educational Assistant

Did YOU attend one of our trainings? If you did not complete our online feedback form, please click [here](#) to complete it so we can improve our offerings!



The SWREC is proud to be partnering with the NMPED Math and Science Bureau and WestEd to bring top notch science training to our districts. Reserve, Deming, Hatch and Lordsburg are participating in the New Mexico Science Innovations Leadership Cadre. To date, the school teams, composed of administrators and teachers, have received 4 days of interactive science training in Deming. They also participate in Zoom "office hours" and receive site visits from the Science Bureau to assist with implementation of NM STEM Ready standards at their schools. We are thankful that the PED is bring this valuable training to our region rather than requiring teachers to travel to locations like Albuquerque or Santa Fe. To sum it up, one participant described the learning as "innovative ways to integrate science into the everyday lessons in my classroom."

Federal Communications Commission's Consumer Education Forum

Hosted by The Deming-Luna County Chamber of Commerce and the City of Deming

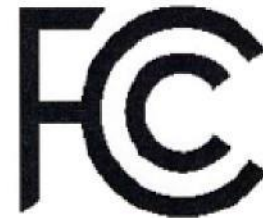
Are you getting unwanted robocalls and scam calls?

Is your phone bill confusing and seemingly written in some other language?

How can you be sure not to lose your favorite television stations after the upcoming broadcast transition?

How do you make your voice heard regarding telecommunications and broadcasting issues?

Federal Communications Commission officials will be here to answer your questions and help address telecommunication issues you may have.



**January 30, 2020
9:00 am**

**Andres Z. Silva Conference Center
119 E. Pine St
Deming, NM 88030**

Free and Open to the Public




DID YOU KNOW...

... there is controversy over whether or not you should write out the full year 2020 on [legal documents to prevent fraud? Read this article for the debate and decide for yourself!](#)

...2020 is a leap year? Those born on February 29 get to celebrate their birthday on their actual birth date!

...beginning Jan. 1, prospective educators are now able to take either of two tests - the NES Series of Tests developed by Pearson or the Praxis Series of Tests developed by ETS? Beginning Sept. 1, only the Praxis test will be offered.

... the legislative 30 day session begins January 21? [Here](#) is the link to the NM Legislature website to keep up with all that is being addressed, and how to get in touch with your legislators.



Penpals

Stanford Science Penpals

Have you ever wanted to ask a scientist a question, but don't know one personally? Do you wonder what being a scientist really means, or what kinds of people become scientists? Well here is your chance to get some answers! Here is a program featuring Stanford scientists from different fields, backgrounds, and places, who are here to answer all of your questions!

Stanford Science Penpals hosts Ask a Stanford Scientist, connecting 6th - 12th grade classrooms to Stanford scientists. Their goal is to expose kids to diverse scientific careers, answer science questions, and share their love of science!

Teachers, check out [the website](#). From the bottom of any scientist's page, students can ask them

question (it's all on google forms), see the questions that have been asked and their answers, or sign up to hear when answers get posted (teachers will probably want that one). It usually takes scientists a few weeks (up to 6 weeks sometimes) to answer questions and get them published on the website.

Who are we?

Southwest Regional Education Cooperative (SWREC) is an agency serving 8 member public school districts in southwest New Mexico by providing professional development, classroom and leadership coaching, technical assistance and fiscal management.

MEMBER DISTRICTS include:

- Animas Public Schools
- Cobre Consolidated Schools
- Deming Public Schools
- Hatch Valley Public Schools
- Lordsburg Municipal Schools
- Reserve Independent Schools
- Silver Consolidated Schools T or C Municipal Schools

We are driven by your success!



Share



Tweet



Forward to teachers who have not yet signed up!

Copyright © 2019 Southwest Regional Education Cooperative, All rights reserved.

**SWREC Business Services: 405 N. Date Street, Suite 8,
Truth or Consequences, NM 87901
(575) 894-7589**