

- The following tools are designed to be used to demonstrate a fully tiered EWI meeting.
- Each participant takes one of the cards and plays one of the roles (need 4-6 people for demonstration and can add others if you want).
- On each card is information that the person knows about the student, groups, and issues being discussed (encourage participants to add additional things that they “know” (improvise) about these students/issues and their performance/actions in school. Have fun with it.
- The intervention protocol should be used for each of the demonstration conversations.

EWI Meeting Process

Identify Student/Group/Issue (1-2 minutes)

- Identifies which off-track behaviors the student(s) exhibit(s)
- Identifies data supporting identification for intervention (from EWI report)

Team provides information (2-4 minutes)





- Team members succinctly (monitor your airtime) provide additional information about why off-track indicators may be present

Team members discuss intervention options (3-5 minutes)

- Consult resource map
- Discuss who will champion follow up
- Determine date for follow-up conversation
- Determine communication with family or families





Tier 3: Data to Action



Felicia	Terry	Donette	Rick
			
Data <u>FOR</u> Action	Data <u>FOR</u> Action	Data <u>FOR</u> Action	Data <u>FOR</u> Action
Current (Q1)	Current (Q1)	Current (Q1)	Current (Q1)
Attendance: 5 Abs Referrals: 6 Math: 68% ELA: 77%	Attendance: 0 Abs Referrals: Susp Math: 88% ELA: 53%	Attendance: 10 Tdy Referrals: 2 Math: 68% ELA: 55%	Attendance: 5 Abs Referrals: 1 Math: 56% ELA: 87%
End of Previous Year	End of Previous Year	End of Previous Year	End of Previous Year
Attendance: 96% Referrals: 0 Math: B ELA: A	Attendance: 93% Referrals: 2 Math: A ELA: C	Attendance: 99% Referrals: 14 Math: C ELA: D	Attendance: 81% Referrals: 1 Math: C ELA: B





Tier 3: Data to Action



Felicia	Terry	Donette	Rick
			
Data <u>FOR</u> Action	Data <u>FOR</u> Action	Data <u>FOR</u> Action	Data <u>FOR</u> Action
Current (Q1)	Current (Q1)	Current (Q1)	Current (Q1)
Attendance: 5 Abs Referrals: 6 Math: 68% ELA: 77%	Attendance: 0 Abs Referrals: Susp Math: 88% ELA: 53%	Attendance: 10 Tdy Referrals: 2 Math: 68% ELA: 55%	Attendance: 5 Abs Referrals: 1 Math: 56% ELA: 87%
End of Previous Year	End of Previous Year	End of Previous Year	End of Previous Year
Attendance: 96% Referrals: 0 Math: B ELA: A	Attendance: 93% Referrals: 2 Math: A ELA: C	Attendance: 99% Referrals: 14 Math: C ELA: D	Attendance: 81% Referrals: 1 Math: C ELA: B

Tier 3: Data to Action



Felicia	Terry	Donette	Rick
			
Data <u>FOR</u> Action	Data <u>FOR</u> Action	Data <u>FOR</u> Action	Data <u>FOR</u> Action
Current (Q1)	Current (Q1)	Current (Q1)	Current (Q1)
Attendance: 5 Abs Referrals: 6 Math: 68% ELA: 77%	Attendance: 0 Abs Referrals: Susp Math: 88% ELA: 53%	Attendance: 10 Tdy Referrals: 2 Math: 68% ELA: 55%	Attendance: 5 Abs Referrals: 1 Math: 56% ELA: 87%
End of Previous Year	End of Previous Year	End of Previous Year	End of Previous Year
Attendance: 96% Referrals: 0 Math: B ELA: A	Attendance: 93% Referrals: 2 Math: A ELA: C	Attendance: 99% Referrals: 14 Math: C ELA: D	Attendance: 81% Referrals: 1 Math: C ELA: B

Action Plan Document: Tier 3 Intervention Notes



	Point Person	Notes	Interventions
Felicia			
Terry			
Donette			
Rick			

Action Plan Document: Tier 2 and Tier 1 Intervention Notes



	Point Person	Notes	Interventions
Math Stars			
Behavior Referrals			
ELA Grades			

Tiered Discussion Guide: Mr./Ms. Smith (Facilitator)



Issue	Notes about the Student
Felicia	Flags in Attendance and Math. F in Science and C in Social Studies
Terry	Flags in Behavior and Literacy. Got into a fight yesterday with Sarah. Grades of D (70%) in Science and B (89%) in Social Studies
Donette	Flag in ELA. Grades of B in Science and B in Social Studies
Rick	Flags in Attendance and Math. Grades of B in Science and B in Social Studies



Tiered Discussion Guide: Dr. Angle (Math Teacher)



Issue	Notes about the Student
Felicia	Sleeps in your class on a lot of days during 1st period. Felicia doesn't seem to be remembering much of the information covered in class
Terry	Seems to be really good at Math and highly skilled. Terry usually finishes early and is really distracting to others
Donette	You know that Donette is on the basketball team
Rick	Doesn't do any school work. He is "too cool" for it even though he can do it. He is in early to school and seems to be hanging around (might be a time for intervention)



Tiered Discussion Guide: Mr./Ms. Smith (Facilitator)



Issue	Notes about Issue
<p>Math Stars</p>	<p>Go through the list for all the Fs and Ds. From Wilber to Karena. Say who is in and who is out based on the data. For example: Wilber fits all the criteria. Good attendance and behavior but failing math. Carmina does not. Although she is failing math and has good behavior, she has poor attendance.</p>
<p>Behavior Referrals</p>	<p>There are several kids who had no referrals at the end of last year but did in Q1 of this year. Ask the group for thoughts on these students and then determine 1 intervention that could help all of them.</p>
<p>ELA Grades</p>	<p>Major down shift in ELA grades from the end of last year to the beginning of this year. Let the group know that this trend occurs every year. Focus the group on ways to support the ELA teacher.</p>

Break



Tiered Discussion Guide: Dr. Angle (Math Teacher)



Issue	Notes about Issue
<p>Math Stars</p>	<p>Lynetta Cahill and Kaylene Cronk barely earned their Cs. They could really use the support.</p>
<p>Behavior Referrals</p>	<p>You have a great relationship with Juliet and Joey. They were going out but just broke up.</p>
<p>ELA Grades</p>	<p>All subjects went down from last year to this year. Point out the math grades from that one class you guys just talked about for tier 2. 1/2 got worse, a quarter stayed the same and a quarter got better. Problems reading/writing may be the reason all of them are going down.</p>



Tiered Discussion Guide: Ms./Mr. Roads (Social Studies Teacher)



Issue	Notes about the Student
Felicia	Getting a “C” but misses lots of materials. Seems to be able to do the work.
Terry	Terry is really interested in geography and maps and is really good at remembering these things. He is fine in your class.
Donette	Drives you crazy in class. Behavior is very distracting for you as the teacher and for other students who are trying to pay attention.
Rick	He seemed to enjoy the mapping we just did and likes the hands on work. If he has to write anything, he loses interest quickly



Tiered Discussion Guide: Ms./Mr.. Novel (English Teacher)



Issue	Notes about the Student
Felicia	No problem in your class. She does average to above average. You have a good relationship with her mother (possible Intervention).
Terry	He attempts to complete assignments but really struggles with the material.
Donette	Does not seem to be interested in class and is a distraction to others. Seems to come from challenges with reading comprehension.
Rick	Is really interested in stories (especially fiction). Has average skills but is excited about the novel we are reading.



Tiered Discussion Guide: Ms./Mr. Roads (Social Studies Teacher)



Issue	Notes about Issue
Math Stars	Rick Erics and Felicia Johnson have been showing up a lot lately. You don't think their attendance should count them out.
Behavior Referrals	Maya, Mi, and Mira act out during writing assignments. Joey and Juliet are going out. They're more interested in each other than the work. You had to remind them today to get back to work.
ELA Grades	Your biggest issue is to get them to write more than a couple sentences at a time. Paragraphs are 3 sentences with 3-4 words each. Make a suggestion for an intervention that has worked for you with this issue in the past.



Tiered Discussion Guide: Ms./Mr.. Novel (English Teacher)



Issue	Notes about Issue
Math Stars	Donette Samuelson's behavior issues have really come down since last year and you think it would be good for her to get extra support in math. You think getting extra help in math may motivate her to do better in all her classes.
Behavior Referrals	Try to Speak First: You are responsible for 4 referral for Mira, Maya, and Mi. They only seem to get through about half the assignments before getting off task. Talking to their neighbors and each other. Their proficiency tests are good though.
ELA Grades	This happens every year. You see a lot of "forgetting" over the summer. Stuff you know you taught, but now they longer know how to do.



Tiered Discussion Guide: Ms./Mr. Johnson (Tutor/ParaPro/CY)



Issue	Notes about the Student
Felicia	Signed up for your after school program but hasn't shown up yet.
Terry	He has an okay time in most classes but has had a hard time with reading assignments (possible area for intervention).
Donette	She has told you that he doesn't want your help and doesn't interact with you.
Rick	You work with Rick in Math class a lot. She has been coming to after school program but has been so-so in actually accomplishing much.



Tiered Discussion Guide: Mr./Ms. Ruiz (Counselor/social worker/CIS)



Issue	Notes about the Student
Felicia	You have not worked with John.
Terry	You got a note from the AP about Adrian about an incident that occurred during lunch.
Donette	You have worked with him on some anger issues. Samuel got into a lot of trouble last year. He was picked on multiple times for not being able to do work and his teachers last year reported that he gets frustrated easily.
Rick	Has a brother that you have worked with before and you have met both mom and dad.



Tiered Discussion Guide: Ms./Mr. Johnson (Tutor/ParaPro/CY)



Issue	Notes about Issue
Math Stars	You've tried working with Juliet Dehner and Donette Samuelson and they refuse to accept the support and will usually attempt to get other kids off-task as well.
Behavior Referrals	Maya, Mira, and Mi get off task in everyone's class. You can get them to work if you are sitting by them, but the moment you walk away, they are off task.
ELA Grades	This one class we're talking about for Tier 2 has some of the worst grades. You would like to do something for that class in particular. If the school can help them, then it would take a big bite out of the problem.



Tiered Discussion Guide: Mr./Ms. Ruiz (Counselor/social worker/CIS)



Issue	Notes about Issue
Math Stars	You would like this program to be open for all students who need help in Math, even if they have poor attendance and behavior problems now. Let them in and have their behavior/attendance after they are in determine if they can stay in the program.
Behavior Referrals	Hold off Until Everyone Talks: You think the solution should be a daily thing. Something small to refocus them and remind them to do the work. It should be something positive. Their behavior issues are not major. None of them have been suspended.
ELA Grades	A lot of students were given Ds instead of Fs in ELA to not hold them back. They know enough not to want to hold them back, but not enough to do well the next year. They need a jumpstart.

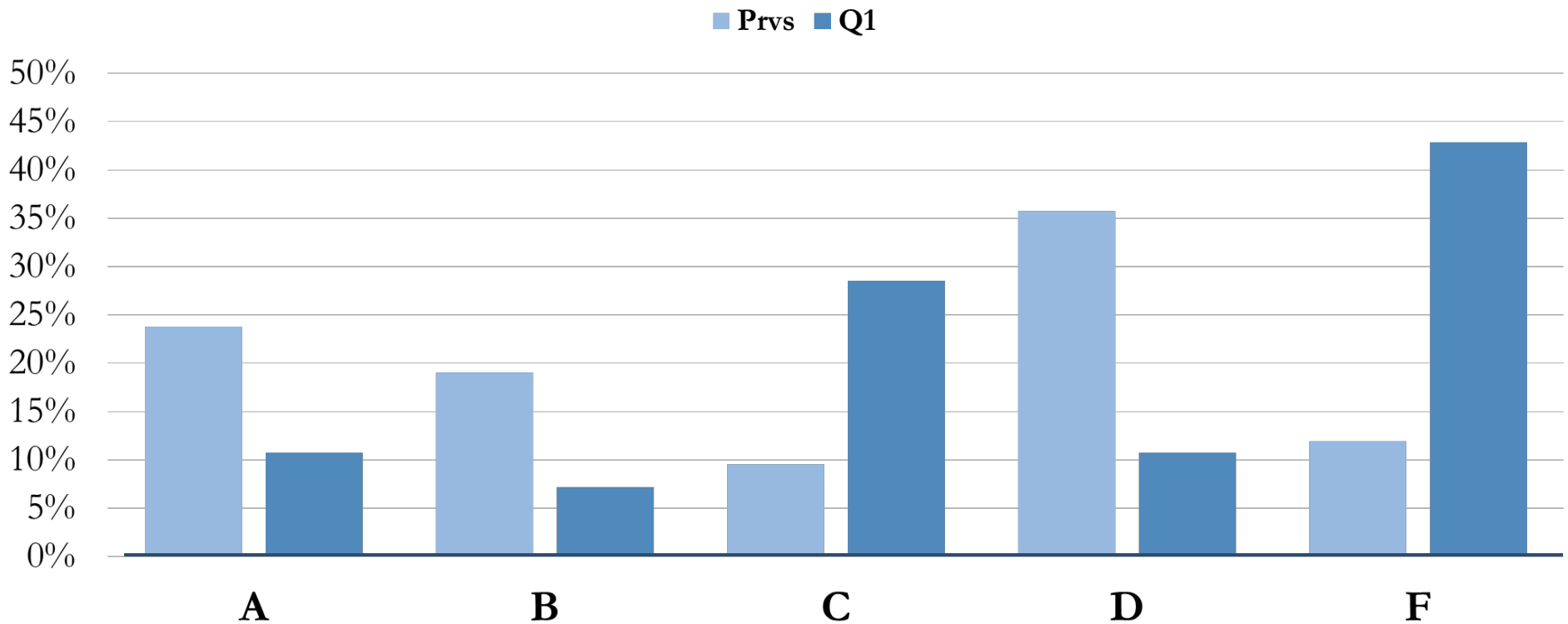


Tier 2: Data to Action



ID	FirstName	LastName	SPED	Attendance		Behavior		ELA		Math	
				Prvs	Q1	Prvs	Q1	Prvs	Q1	Prvs	Q1
41539	Wilbur	Auyeung	Y	98%	98%	6	3	C	F	D	F
303485	Joslyn	Bigley	N	91%	91%	0	0	D	C	C	F
303437	Carmina	Blakes	N	86%	81%	5	4	C	F	C	F
44722	Juliet	Dehner	N	83%	87%	0	6	D	F	D	F
43322	Arla	Boren	Y	82%	90%	4	4	D	F	F	F
304911	#Donette	Samualson	N	99%	92%	14	2	D	F	C	D
45522	Mi	Cairns	N	92%	90%	0	6	F	D	C	D
303331	#Rick	Eric	N	81%	86%	1	1	D	C	B	D
303308	#Felicia	Johnson	N	98%	81%	1	6	A	C	A	D
303381	Karena	Beatrice	N	60%	67%	10	11	F	F	A	D
303433	Lynetta	Cahill	N	99%	98%	0	0	F	F	D	C
303865	Angele	Bickel	N	97%	96%	9	8	D	F	D	C
303562	Maya	Bodie	Y	86%	81%	0	4	F	F	B	C
42480	Kaylene	Cronk	N	83%	85%	4	1	D	F	C	C
303871	Sandie	Demott	N	83%	87%	0	0	C	C	C	C
303441	Fairy	Bruss	N	81%	84%	10	11	D	F	C	C
45187	Joey	Brittan	N	96%	97%	0	11	B	C	D	B
44669	Mira	Boyette	N	90%	96%	0	8	F	F	B	B
304822	Monnie	Croker	N	90%	89%	6	3	D	D	C	B
303556	Clinton	Appling	N	88%	92%	0	0	D	D	D	B
40486	#Terry	Adrians	Y	93%	98%	2	11	C	F	A	B

ELA Grade Distribution



The above data represents how your students did at the end of last year and how they are doing this year. The same students are compared from one year to the next.

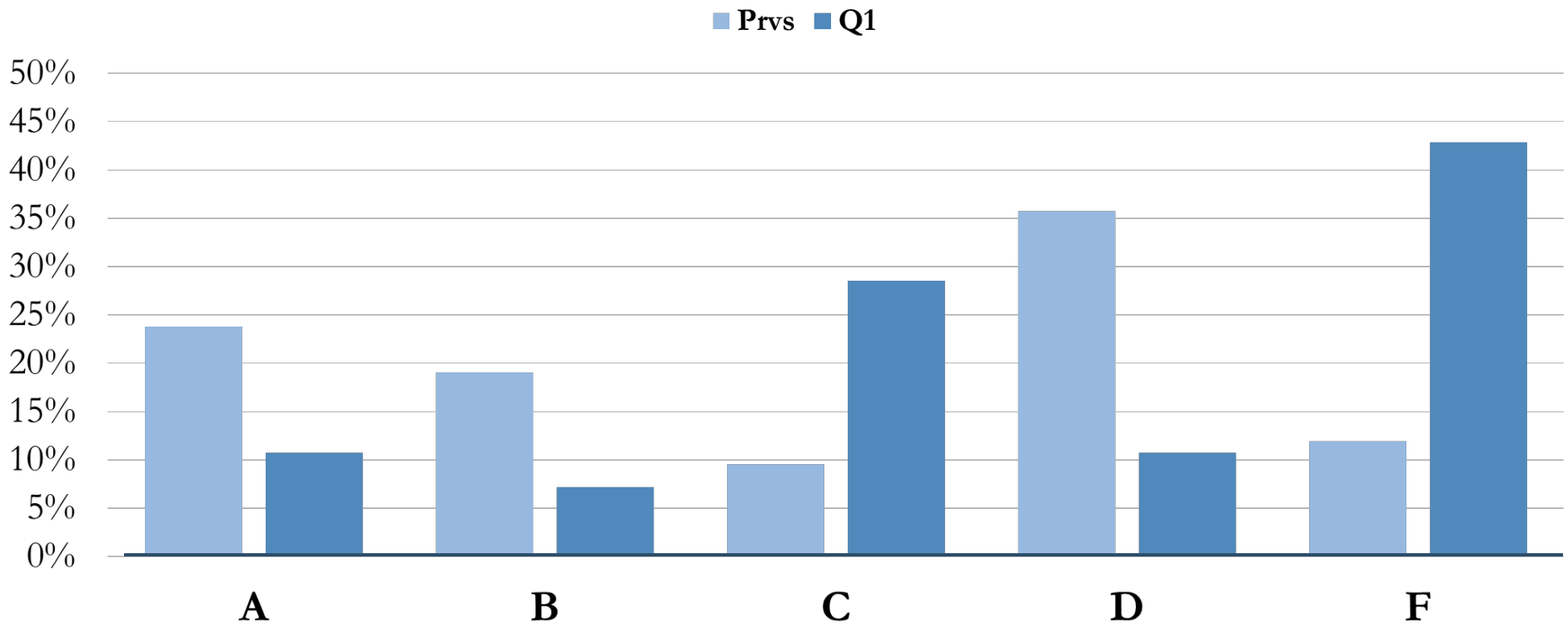
This is a yearly trend for your school. From year to year, your students consistently drop 1-2 grades from the end of the previous year to the start of the new one. A's and B's turn to C's and D's. C's and D's turn to F's.

Tier 2: Data to Action



ID	FirstName	LastName	SPED	Attendance		Behavior		ELA		Math	
				Prvs	Q1	Prvs	Q1	Prvs	Q1	Prvs	Q1
41539	Wilbur	Auyeung	Y	98%	98%	6	3	C	F	D	F
303485	Joslyn	Bigley	N	91%	91%	0	0	D	C	C	F
303437	Carmina	Blakes	N	86%	81%	5	4	C	F	C	F
44722	Juliet	Dehner	N	83%	87%	0	6	D	F	D	F
43322	Arla	Boren	Y	82%	90%	4	4	D	F	F	F
304911	#Donette	Samualson	N	99%	92%	14	2	D	F	C	D
45522	Mi	Cairns	N	92%	90%	0	6	F	D	C	D
303331	#Rick	Eric	N	81%	86%	1	1	D	C	B	D
303308	#Felicia	Johnson	N	98%	81%	1	6	A	C	A	D
303381	Karena	Beatrice	N	60%	67%	10	11	F	F	A	D
303433	Lynetta	Cahill	N	99%	98%	0	0	F	F	D	C
303865	Angele	Bickel	N	97%	96%	9	8	D	F	D	C
303562	Maya	Bodie	Y	86%	81%	0	4	F	F	B	C
42480	Kaylene	Cronk	N	83%	85%	4	1	D	F	C	C
303871	Sandie	Demott	N	83%	87%	0	0	C	C	C	C
303441	Fairy	Bruss	N	81%	84%	10	11	D	F	C	C
45187	Joey	Brittan	N	96%	97%	0	11	B	C	D	B
44669	Mira	Boyette	N	90%	96%	0	8	F	F	B	B
304822	Monnie	Croker	N	90%	89%	6	3	D	D	C	B
303556	Clinton	Appling	N	88%	92%	0	0	D	D	D	B
40486	#Terry	Adrians	Y	93%	98%	2	11	C	F	A	B

ELA Grade Distribution



The above data represents how your students did at the end of last year and how they are doing this year. The same students are compared from one year to the next.

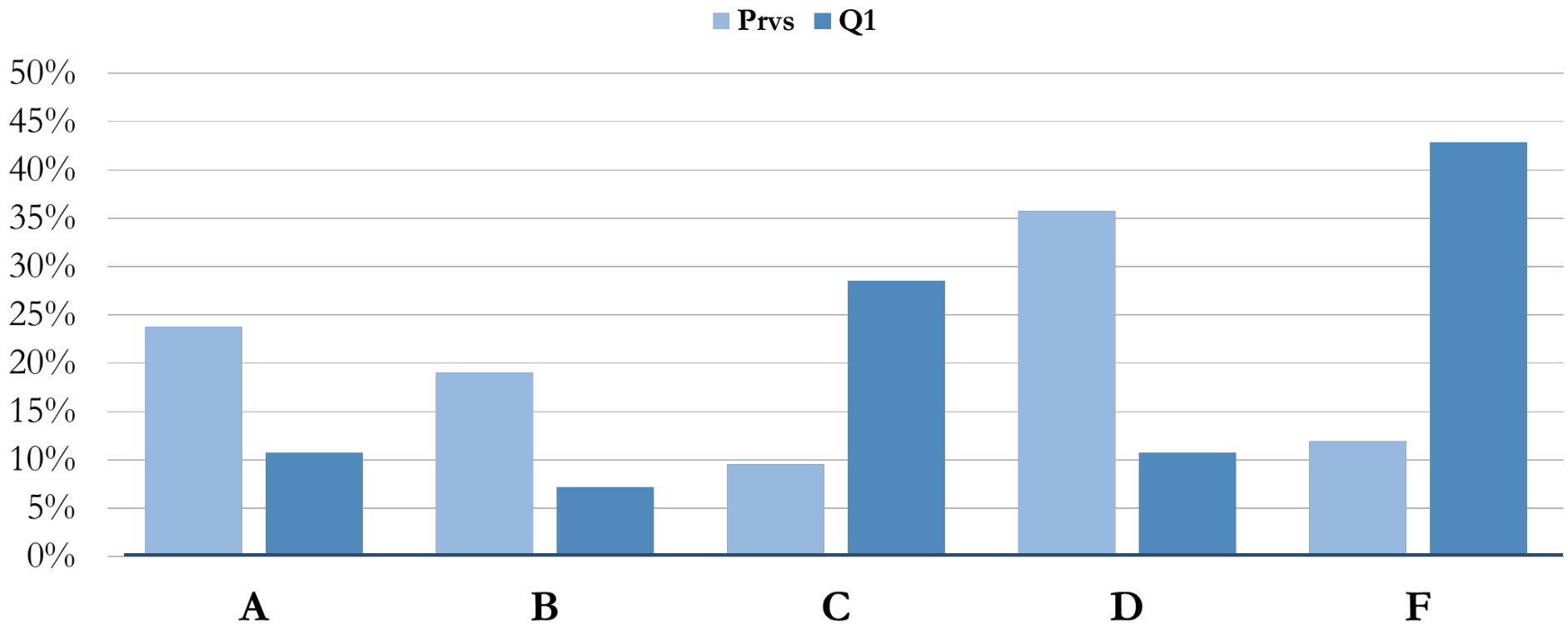
This is a yearly trend for your school. From year to year, your students consistently drop 1-2 grades from the end of the previous year to the start of the new one. A's and B's turn to C's and D's. C's and D's turn to F's.

Tier 2: Data to Action



ID	FirstName	LastName	SPED	Attendance		Behavior		ELA		Math	
				Prvs	Q1	Prvs	Q1	Prvs	Q1	Prvs	Q1
41539	Wilbur	Auyeung	Y	98%	98%	6	3	C	F	D	F
303485	Joslyn	Bigley	N	91%	91%	0	0	D	C	C	F
303437	Carmina	Blakes	N	86%	81%	5	4	C	F	C	F
44722	Juliet	Dehner	N	83%	87%	0	6	D	F	D	F
43322	Arla	Boren	Y	82%	90%	4	4	D	F	F	F
304911	#Donette	Samualson	N	99%	92%	14	2	D	F	C	D
45522	Mi	Cairns	N	92%	90%	0	6	F	D	C	D
303331	#Rick	Eric	N	81%	86%	1	1	D	C	B	D
303308	#Felicia	Johnson	N	98%	81%	1	6	A	C	A	D
303381	Karena	Beatrice	N	60%	67%	10	11	F	F	A	D
303433	Lynetta	Cahill	N	99%	98%	0	0	F	F	D	C
303865	Angele	Bickel	N	97%	96%	9	8	D	F	D	C
303562	Maya	Bodie	Y	86%	81%	0	4	F	F	B	C
42480	Kaylene	Cronk	N	83%	85%	4	1	D	F	C	C
303871	Sandie	Demott	N	83%	87%	0	0	C	C	C	C
303441	Fairy	Bruss	N	81%	84%	10	11	D	F	C	C
45187	Joey	Brittan	N	96%	97%	0	11	B	C	D	B
44669	Mira	Boyette	N	90%	96%	0	8	F	F	B	B
304822	Monnie	Croker	N	90%	89%	6	3	D	D	C	B
303556	Clinton	Appling	N	88%	92%	0	0	D	D	D	B
40486	#Terry	Adrians	Y	93%	98%	2	11	C	F	A	B

ELA Grade Distribution



The above data represents how your students did at the end of last year and how they are doing this year. The same students are compared from one year to the next.

This is a yearly trend for your school. From year to year, your students consistently drop 1-2 grades from the end of the previous year to the start of the new one. A's and B's turn to C's and D's. C's and D's turn to F's.