

## Moving knowledge, not students and educators

Through technology-enabled collaborative learning, EWS ECHO builds capacity and creates access to high-quality professional learning throughout New Mexico.



## Hub and spoke knowledge-sharing networks create a learning loop:

- Educators learn from experts.
- Educators learn from each other.
- Experts learn from educators as best practices emerge.

## Doing More for Students and Educators Across New Mexico



### Educators

- Acquire new expertise & resources
- Access to mentoring & subject matter experts
- Building a community of practice



### Community

- Build & retain good educators
- Skilled & engaged workforce
- Create more effective programs



### Students

- More opportunities for learning
- Guidance and access to resources
- Tools to overcome barriers



### State Systems

- Increase graduation rates
- Reduce remediation rates
- Develop our economy through a knowledgeable, prepared workforce

## Transforming Education in New Mexico



### Creates Virtual Learning Communities

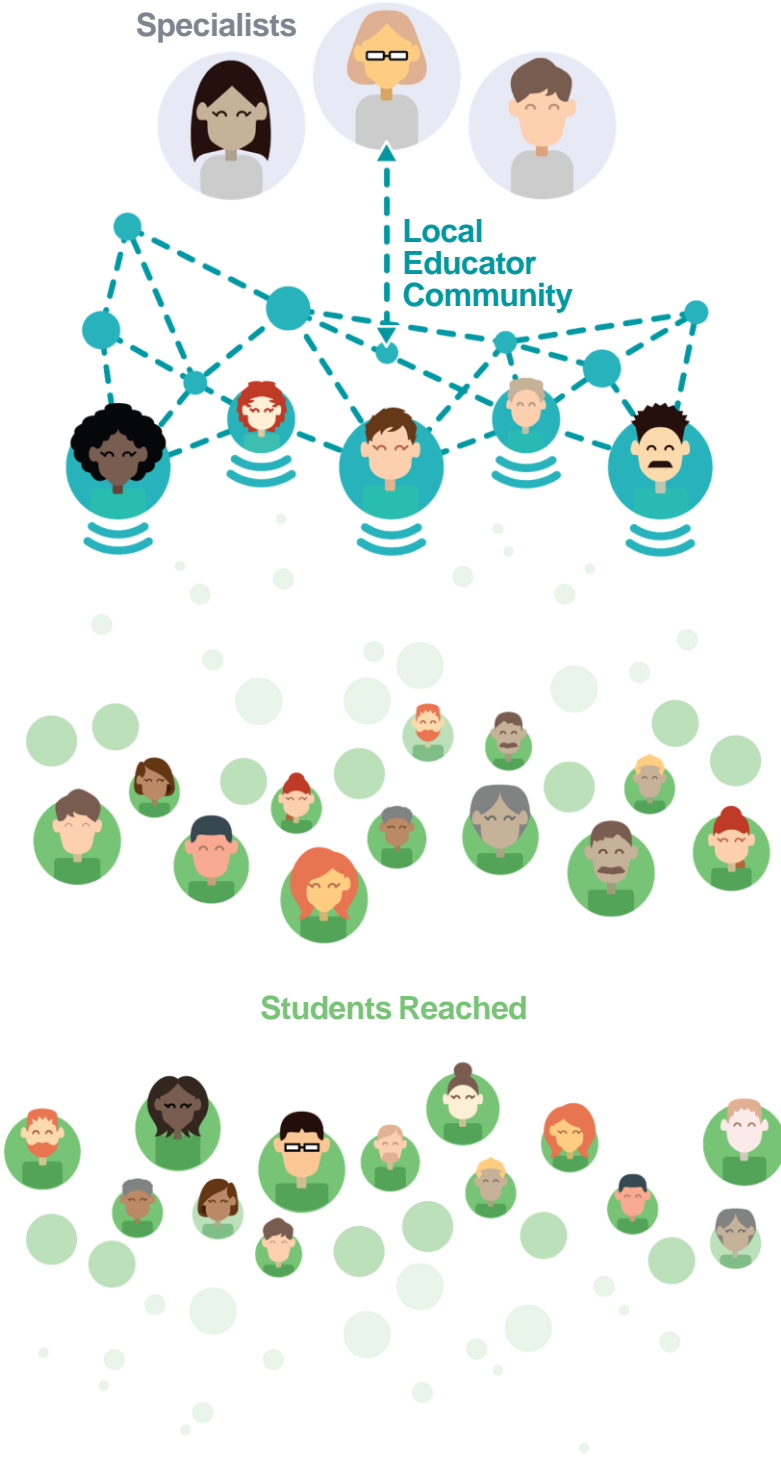
Educators in the most remote and isolated schools can regularly receive and share effective practices and present their most complex challenges where all teach and all learn.

For More Information about New Mexico EWS ECHO contact: [EWS@TDSchools.org](mailto:EWS@TDSchools.org)

Are you a part of ECHO?

[www.echo.unm.edu](http://www.echo.unm.edu)

## ECHO Model™



Providing the opportunity for educators in remote and isolated areas to share best practices, receive ongoing and timely professional development, and implement collaborative problem solving methods to help solve complex issues and questions regarding New Mexico’s school systems and its learners.



Use Technology to leverage scarce resources



Share “best practices” to reduce disparities



Apply case-based learning to master complexity



Evaluate and monitor outcomes