

Capitan Municipal Schools | New Secondary School

Steering Committee Meeting | January 15, 2015



Agenda

1. Project update

- a) PSFA reviewing DD submittal
- b) CMS, D/P/S, HB finalizing site logistics plan
- c) HB finalizing DD estimate
- d) D/P/S finalizing construction documents

2. Interior finishes

3. Display locations

4. Corridor glazing strategy

5. Next Steps

- a) *Next meeting: TBD tonight*
- b) *Upcoming schedule*

Project Goals

- **Technology-rich**; “full campus integration”
- Easy to **maintain** and **operate**
- Controlled access; **secure** and **safe**
- Open – “**education on display**”
- Natural **light**
- **Flexibility** – education spaces and infrastructure
- **Warm** and **inviting**, non-institutional
- **Collaborative** spaces
- **Open** feel, but cozy

Finish Scheme Options



Option 1



Option 2

Floor Finish Pattern

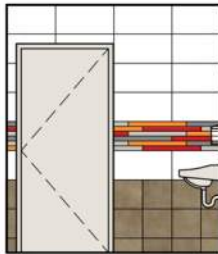


High School level

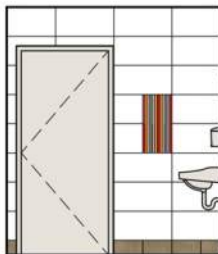
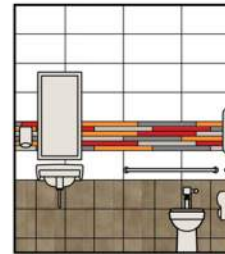
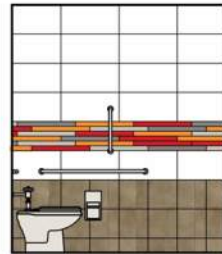
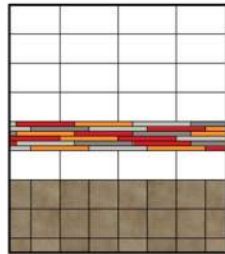


Middle School level

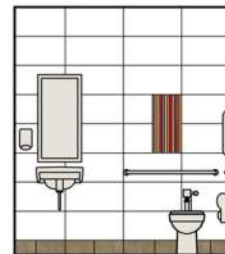
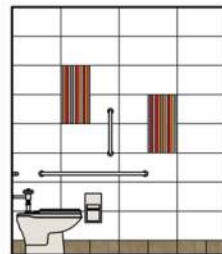
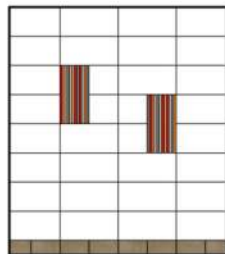
Restroom Wall Tile Patterns



Option 1



Option 2



HS display locations

High School level

40'-0" x 5'-4" of display area



Middle School level

25'-0" x 5'-4" of display area



Display Case Examples



Traditional



Colored Shelves



Millwork Look



Full Height



classroom windows - potential locations

High School level

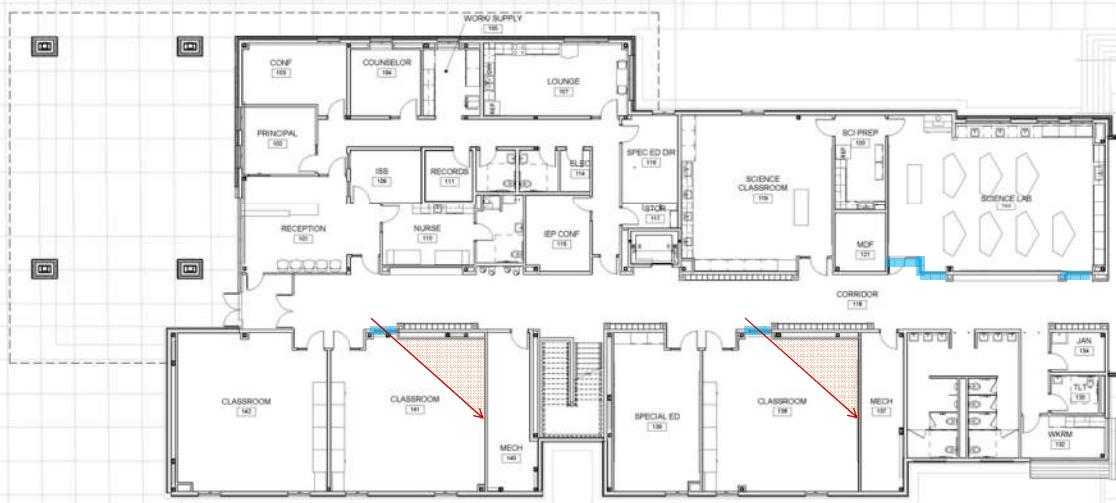


Middle School level

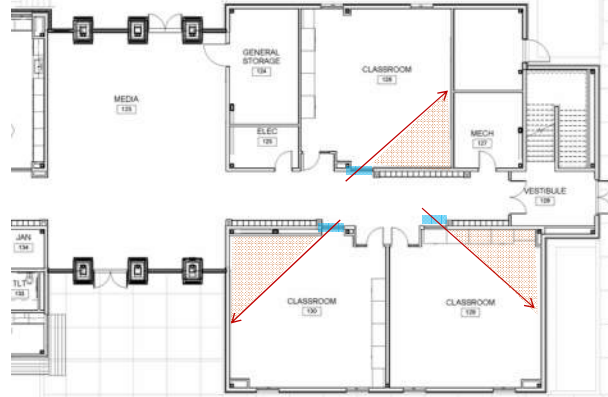


classroom windows - potential locations

High School level

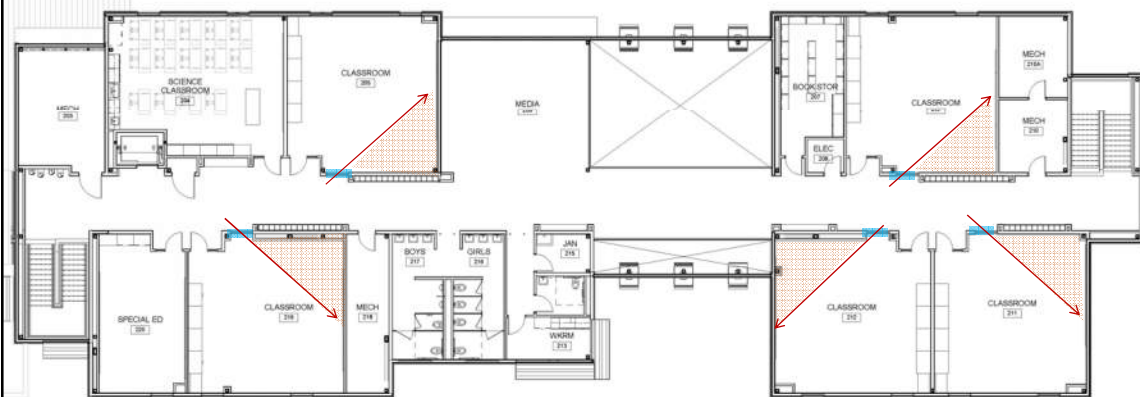


classroom windows - potential locations



High School level

classroom windows - potential locations



Middle School level



Next Steps

1. Finalize construction documents
2. Develop furniture package with CMS
3. Upcoming schedule:
 - a) Design team meeting – 1/19
 - b) CMS Board meeting – 1/19
 - c) 95% Construction Document review – 2/9
 - d) 100% Construction Documents due – 2/25
 - e) Construction begins!!