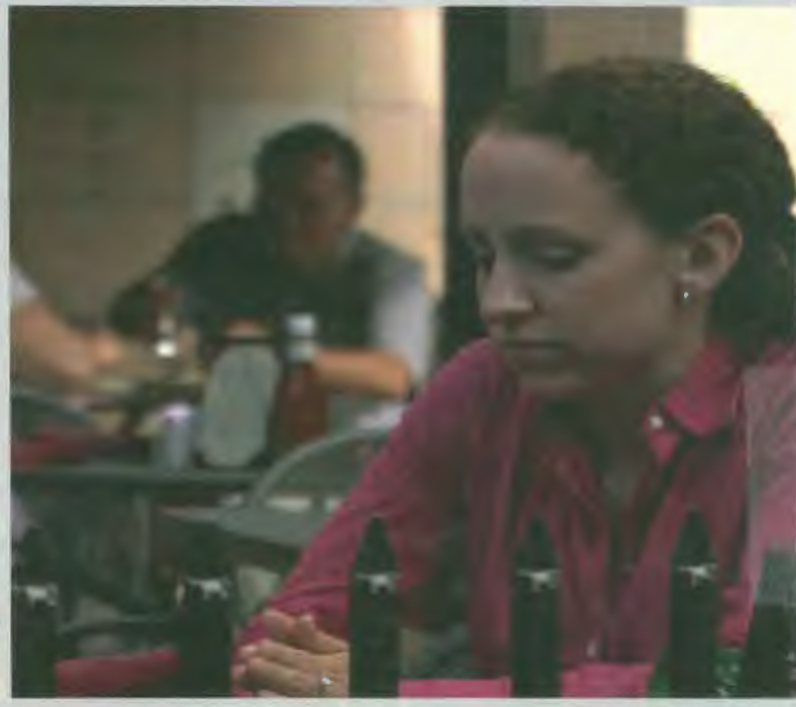


REPORT PROFESSIONALS' MISCONDUCT



All employees and agents of a public school district, charter schools or private schools have an obligation and legal responsibility to report misconduct by instructional personnel and school administrators which affects the health, safety or welfare of a student.

OBSCENE LANGUAGE
DRUG AND ALCOHOL USE
DISPARAGING COMMENTS
PREJUDICE OR BIGOTRY
SEXUAL INNUENDO
CHEATING
TESTING VIOLATIONS
PHYSICAL AGGRESSION
ACCEPT OR OFFER FAVORS

Failure to report misconduct may result in penalties up to termination of employment and revocation of an educator's certificate.

If someone tells you about misconduct be a **LEADER**.

LISTEN

EVALUATE

ACT IMMEDIATELY

DOCUMENT

ENCOURAGE

REPORT

REPORT TO:

Mr. Henry Fortier, *Superintendent of Catholic Schools*

(407) 246-4904

Also report to the principal of your school



CHILD ABUSE

Look for the Signs

Dial 1-800-96-ABUSE



Signs of Physical Abuse

The child may have unexplained:

- Bruises, welts, cuts or other injuries
- Broken bones
- Burns

A child experiencing physical abuse may:

- Seem withdrawn or depressed
- Seem afraid to go home or may run away
- Shy away from physical contact
- Be aggressive
- Wear inappropriate clothing to hide injuries



Signs of Sexual Abuse

The child may have:

- Torn, stained or bloody underwear
- Trouble walking or sitting
- Pain or itching in genital area
- A sexually transmitted disease

A child experiencing sexual abuse may:

- Have unusual knowledge of sex or act seductively
- Fear a particular person
- Seem withdrawn or depressed
- Gain or lose weight suddenly
- Shy away from physical contact
- Run away from home



Signs of Neglect

The child may have:

- Unattended medical needs
- Little or no supervision at home
- Poor hygiene
- Appear underweight

A child experiencing neglect may:

- Be frequently tired or hungry
- Steal food
- Appear overly needy for adult attention



Look for the Patterns

Serious abuse usually involves a combination of factors. While a single sign may not be significant, a pattern of physical or behavioral signs is a serious indicator and should be reported.

If a child tells YOU about abuse

Be a Good Listener Show that you understand and believe what the child tells you. Encourage, but don't pressure him/her to talk. Ask open ended questions.

Be Supportive Tell the child he/she did the right thing by coming to you. Stress that he/she is not to blame. Let the child know that you want to help.

Don't Overreact This can frighten the child or prevent him/her from telling you more. Do not talk negatively about the suspected abuser in front of the child.

Document and Report it Document your conversation as soon as you can. If possible, write down the child's exact words.

Don't Delay Never assume someone else will report the abuse. The sooner it's reported, the sooner the child and their family can be helped.

WHO MUST REPORT ABUSE?

- | | |
|--------------------------|--------------------|
| Doctors | Police Officers |
| Nurses | Child Care Workers |
| Social Workers | Any Witnesses |
| Any/All School Personnel | |

CALL OR REPORT IT ONLINE AT:
<http://dcf.state.fl.us/abuse/report>